



Student
ExchangeID

MODULES

AUTUMN *Pathways*

OSAKA-KYOTO
October 22-26, 2025



OVERVIEW

Japan is one of the countries that has a fairly interesting education system and has high curriculum standards. where Japan has advantages in a structured curriculum, has a focus on character education, has a high literacy rate and also world-renowned universities. In Additions, Japan is one of the best destinations to study innovative economics and advanced technology in Asia. It is also known that popular study programs in Japan are economics and business, science and technology, and education or humanities. In addition to its high education and global competitiveness, Japan is known as one of the most beautiful countries and has succeeded in promoting its cultural heritage throughout the world. At the same time, the Japanese government offers financial support to participants through scholarships that can be seen as an opportunity to participate in student exchanges or study in Japan.

This educational exchange program is carried out to explore academic and non-academic insights that can help participants achieve their future goals that revolve around culture and education. Therefore, participants are expected and able to identify opportunities and procedures for student exchange programs by participating in SEOI OSAKA – KYOTO 2025.



**You are invited to
Encourage and Empower yourself in
SEOI OSAKA-KYOTO 2025 !!!**



BENEFITS



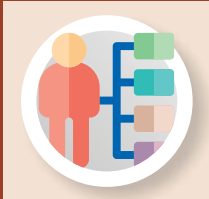
International Certificate

By enrolling in SEOI OSAKA-KYOTO 2025, participants acquire the International Certificate upon the successful completion of all the programs. This certificate acts as proof of the international exposure that is essential for participants to achieve professional future careers or further academic plans.



Educational and Cultural Exchange

SEOI OSAKA-KYOTO 2025 offers participants to experience international learning as well as necessary insights about acceptance and understanding of cross-border cultures and communities. In addition, participants will be able to gain more understanding of Korean history, culture, and tradition. Participants also can acquire inspiration and insight from the Korean participants and education that may motivate them in pursuing future goals. Even more, participants will be able to deepen their comprehension of foreign educational systems and their cultures, develop their analytical and problem-solving skills, and contribute to discussing global issues according to their interests.



Self-development and Awareness

Participants that participate in our SEOI OSAKA-KYOTO 2025 program will be able to develop their confidence in communicating with foreigners and be prepared to adapt and overcome challenges or differences that are present outside of their comfort zone. In addition, participants also will be able to expand their network in the academic and non-academic environment through education and cultural series within SEOI OSAKA-KYOTO 2025.



ACTIVITIES



International Exchange

Studying at a foreign university for a short period of time to gain new insights into universities abroad and experience the atmosphere of being an international student.



Cultural Discovery

Discovering cultural attractions and institutions in Japan to learn and understand Japanese culture.



University Insight

Visiting the best universities in Japan by attending admission workshops and campus tours.



Community Melting Pot

Exposure to many social centers to connect and adapt to Japanese society to improve interpersonal skills.

SCHEDULE

The schedule is tentative



Flight to Osaka

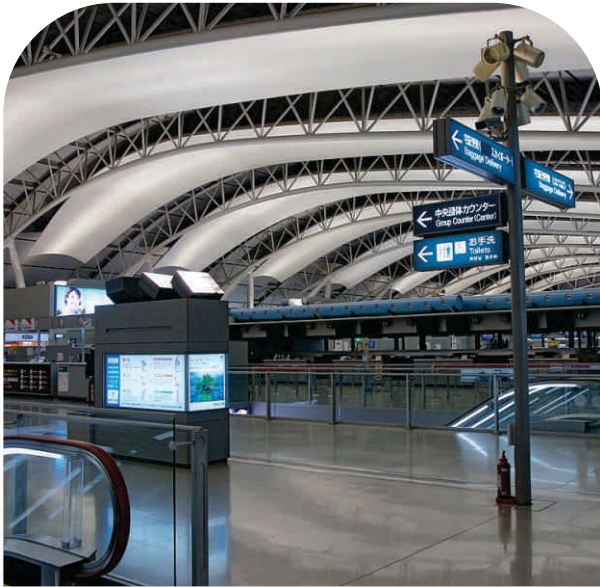
The exchange may take several months even a year, but this program offers an opportunity to know and understand the process of doing an exchange program by connecting with potential partner universities. This is what the participants will be experiencing, starting from taking their feet in a plane to to Osaka, Japan.

Explore

DAY 2



Kansai International Airport



Participants will be arriving at the international airport and be welcomed by the committee as they start the program.



Osaka Castle Park Area



Osaka Castle and Osaka Castle Park form the most attractive part of Osaka and should be high on any visitor's list. Nearby, there are some great restaurants and hotels, making it a good place to stay. Sitting about a kilometer to the east of city. Osaka's two downtowns (Kita and Minami), the Osaka Castle area is the tourist heart of the city. Built around the awe-inspiring tower of Osaka Castle, this green and spacious expanse provides a pleasant escape from the otherwise crowded and concrete expanses of the rest of the

DAY 3

Exchange & Explore

● Osaka Gakuin University



On the next day, participants visited the Osaka Gakuin University, Osaka Gakuin University also known as Osaka Graduate University (OGU), is a mid-sized, mid-level private liberal arts university located in Suita, Osaka Prefecture, Japan. The university focuses on law, economics, and international studies, but still provides a wide array of other subjects for study.

● Osaka Stock Exchange

Afterward, participants head to the Osaka Stock Exchange. The Osaka Stock Exchange, or more officially known as the Osaka Securities Exchange Co., Ltd. (Kabushiki-kaisha saka Shken Torihikijo, OSE), is the second largest futures exchange and stock exchange in Japan after the Tokyo Stock Exchange, based on market capitalization. Participants may learn about market facilities for securities trading, publicizing market prices and quotations, ensuring the fairness of securities trading, and other business regarding the operation of the financial instruments exchange market.



● Dotonbori



Subsequently, participants visit Dotonbori, is a gastronomic, shopping and entertainment center on the south side of the Dotonbori Canal, Osaka, Japan. Along the stretch of road between the Dotonbori Bridge and the Nipponbashi Bridge, there are various restaurants and entertainment facilities.

Exchange & Explore

DAY 4

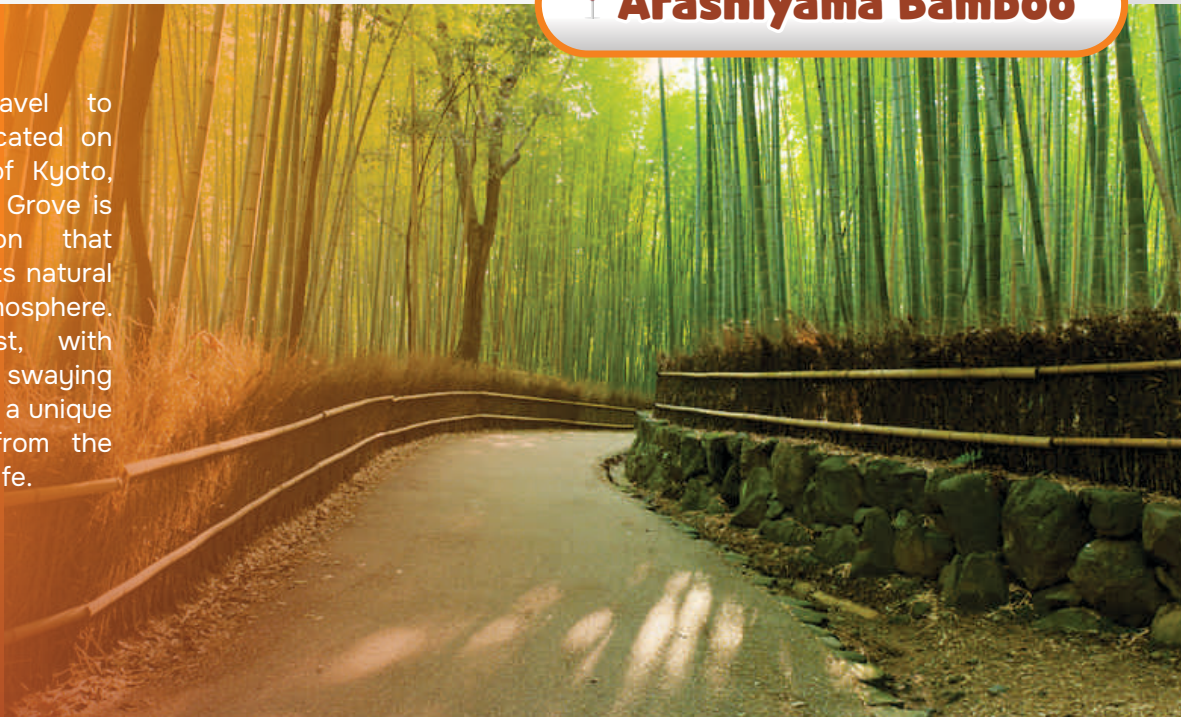
Ryukoku University



Participants will have campus tours and comparative learning in one of Japan's top institutions of higher education based in Kyoto, Japan, Ryukoku University. Ryukoku University is committed to cultivate humans who can “Pursue the truth, Live for the truth, and Manifest the truth”. Education at Ryukoku University will bring depth and breadth to students' lives. During their life at Ryukoku University, students will come to realize how they have been looking at the world only through their colored glasses and what a small world they have been in. Ryukoku University's trait to respect “innovation” and “ambition” is clearly born from its tradition.

Arashiyama Bamboo

Later, participants travel to Arashimaya Bamboo, located on the western outskirts of Kyoto, the Arashiyama Bamboo Grove is a stunning destination that captivates visitors with its natural beauty and serene atmosphere. This enchanting forest, with towering bamboo stalks swaying gently in the wind, offers a unique and peaceful escape from the hustle and bustle of city life.



DAY 5

Closing Program & Homecoming



Kansai International Airport - - - - -



✈ Airport Transfer

Participants will bid farewell to each other and be transferred to the airport as the signal that the students will start a brand-new day with new experiences, new stories, new friends, and new family.



Arrival - - - - -



As the program ends, participants arrive in Indonesia to start a brand new day and experience a learning immersion in Japan.



This proposal is arranged as a reference for
Student Exchange (SEOI) Osaka-Kyoto 2025

Best regards,

Head of Program
SEOI Osaka-Kyoto 2025



SEE YOU IN
OSAKA - KYOTO

Contact Us :

 studentexchange.id  0811 2536 566
 [studentexchangeid](https://www.instagram.com/studentexchangeid)  [studentexchangeid](https://www.tiktok.com/@studentexchangeid)

studentexchange.id