



Student  
ExchangeID

MODULES

# AUTUMN *Pathways*

**TOKYO**

October 11-15, 2025





# OVERVIEW

Japan is one of the countries that has a fairly interesting education system and has high curriculum standards. where Japan has advantages in a structured curriculum, has a focus on character education, has a high literacy rate and also world-renowned universities. In Additions, Japan is one of the best destinations to study innovative economics and advanced technology in Asia. It is also known that popular study programs in Japan are economics and business, science and technology, and education or humanities.

In addition to its high education and global competitiveness, Japan is known as one of the most beautiful countries and has succeeded in promoting its cultural heritage throughout the world. At the same time, the Japanese government offers financial support to participants through scholarships that can be seen as an opportunity to participate in student exchanges or study in Japan.

This educational exchange program is carried out to explore academic and non-academic insights that can help participants achieve their future goals that revolve around culture and education. Therefore, participants are expected and able to identify opportunities and procedures for student exchange programs by participating in SEOI TOKYO 2025.

**You are invited to  
Encourage and Empower yourself in  
SEOI TOKYO 2025 !!!**



# BENEFITS



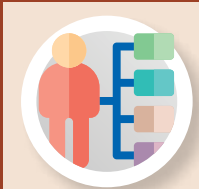
## International Certificate

By enrolling in SEOI TOKYO 2025, participants acquire the International Certificate upon the successful completion of all the programs. This certificate acts as proof of the international exposure that is essential for participants to achieve professional future careers or further academic plans.



## Educational and Cultural Exchange

SEOI TOKYO 2025 offers participants to experience international learning as well as necessary insights about acceptance and understanding of cross-border cultures and communities. In addition, participants will be able to gain more understanding of Korean history, culture, and tradition. Participants also can acquire inspiration and insight from the Korean participants and education that may motivate them in pursuing future goals. Even more, participants will be able to deepen their comprehension of foreign educational systems and their cultures, develop their analytical and problem-solving skills, and contribute to discussing global issues according to their interests.



## Self-development and Awareness

Participants that participate in our SEOI TOKYO 2025 program will be able to develop their confidence in communicating with foreigners and be prepared to adapt and overcome challenges or differences that are present outside of their comfort zone. In addition, participants also will be able to expand their network in the academic and non-academic environment through education and cultural series within SEOI TOKYO 2025.



## Japanese Language Certificate

Upon successful completion of the Japanese language course, participants will be granted an official certificate acknowledging their active participation and basic proficiency in daily Japanese communication. This credential enhances their academic portfolio and reflects their international learning experience through SEOI TOKYO 2025.





# ACTIVITIES



## International Exchange

Studying at a foreign university for a short period of time to gain new insights into universities abroad and experience the atmosphere of being an international student.



## Cultural Discovery

Discovering cultural attractions and institutions in Japan to learn and understand Japanese culture.



## University Insight

Visiting the best universities in Japan by attending admission workshops and campus tours.



## Community Melting Pot

Exposure to many social centers to connect and adapt to Japanese society to improve interpersonal skills.



## Japanese Language Class

Learning directly within a native environment in Tokyo to enhance both Japanese language proficiency and cultural understanding



# SCHEDULE

The schedule is tentative



## Flight to Tokyo

The exchange may take several months even a year, but this program offers an opportunity to know and understand the process of doing an exchange program by connecting with potential partner universities. This is what the participants will be experiencing, **starting from taking their feet in a plane to Tokyo, Japan.**



# DAY 2

## Starting & Exploring



### Narita International Airport



Participants will be arriving at the international airport and be welcomed by the committee as they start the program.



### Akihabara



Akihabara is considered by many to be an otaku cultural centre and a shopping district for video games, anime, manga, and computer goods. Icons from popular anime and manga are displayed prominently in the shops in the area. Participants can stroll and buy things that they find attractive.



# Exchange & Explore

# DAY 3

## Tokyo Denki University



Participants will have campus tours and comparative learning in one of Japan's top institutions of higher education based in central Tokyo, Tokyo Denki University. It is known that Tokyo Denki University is a private university in Adachi, Tokyo, Japan. The university is dedicated to science and technology, this university continues to foster superior human resources to meet the needs of society, changing with the times to make significant contributions to the development of Japanese science and technology.

## Japanese Class

Afterwards, participants join a Japanese Language Class in Tokyo, which offers a comprehensive learning environment where students can develop their language skills while experiencing daily life in Japan. Lessons are often combined with engaging activities that enhance understanding of local customs, communication styles, and social etiquette. These real-life experiences help participants improve their language skills and give valuable insight into how people live and communicate in Japan.



## Shibuya



After that, participants continued the trip to Shibuya, a hub for contemporary fashion and lifestyle, and many of Japan's entertainment and fashion trends emerged on its streets. Around the region, there are a ton of departmental stores and shopping centers that appeal to a wide range of consumers.

## Harajuku

Later, participants travel to Harajuku, the epicenter of Tokyo's peculiar kawaii fashion culture. Harajuku is not merely a location within which one style is focused; it is also a place where many different trends are centered. Community and freedom of expression have become the two main objectives of the subculture of Harajuku fashion.





# Exchange & Explore

# DAY 4

## Tokyo Stock Exchange



Afterward, participants head to the Tokyo Stock Exchange. Participants may learn about market facilities for securities trading, publicizing market prices and quotations, ensuring the fairness of securities trading, and other business regarding the operation of the financial instruments exchange market.

## Asakusa

Asakusa is the center of Tokyo shitamachi (literally “low city”), one of the Tokyo’s districts, where an atmosphere of the Tokyo of past decades survives. Asakusa’s main attraction is Sensoji, a very popular Buddhist temple, built in the 7th century. The temple is approached via the Nakamise, a shopping street that has been providing temple visitors with a variety of traditional, local snacks and tourist souvenirs for centuries.



## Tokyo Skytree



Subsequently, participants visit the famous Tokyo Sky Tree which acts as a landmark of Tokyo as well as a television broadcasting tower. There are two observation decks that enable students to view the beautiful city of Tokyo.



# Closing Program & Homecoming

# DAY 5

## 📍 Ueno Park



On the last day, participants will explore UENO Park, is one of the ve oldest public parks in Japan. It is famous for the Ueno Zoo, many museums, and beautiful momiji leaves fall in autumn. The park was opened to the public in 1873. Its of cial name is Ueno Onshi-Koen, which means (Ueno Imperial Gift Garden).

## 📍 Airport Transfer

Participants will bid farewell to each other and be transferred to the airport as the signal that the students will start a brand-new day with new experiences, new stories, new friends, and new family.



## 📍 Arrival



As the program ends, participants arrive in Indonesia to start a brand new day and experience a learning immersion in Japan.



This proposal is arranged as a reference for  
**Student Exchange (SEOI) Tokyo 2025**

---

Best regards,

**Head of Program  
SEOI Tokyo 2025**





**SEE YOU IN**  
**TOKYO – JAPAN**

Contact Us :

 [studentexchange.id](https://studentexchange.id)  0811 2536 566  
 [studentexchangeid](https://www.instagram.com/studentexchangeid)  [studentexchangeid](https://www.tiktok.com/@studentexchangeid)

**studentexchange.id**